

257 Kitchawan Road

Modern Country Living — 50 Miles From Times Square

4 Bedrooms · 4 Full Baths · 3,720 SF · 2+ Acres · 2 Professional Offices

257Kitchawan.com

Private Sale — Viewings by Appointment Only





257 KITCHAWAN ROAD

Forty Years of Uncommon Living.

Some homes are bought, lived in and sold. This one was created.

For over four decades of one family's stewardship, 257 has been re-shaped by two significant architectural renovations (both by the same firm), each one expanding the character of a home that was never meant to be ordinary.

The original 1960s design was a statement for its time; each update has amplified that vision.

Meticulously maintained. Lovingly cared for. Ready for the next family bold enough to make it their own.

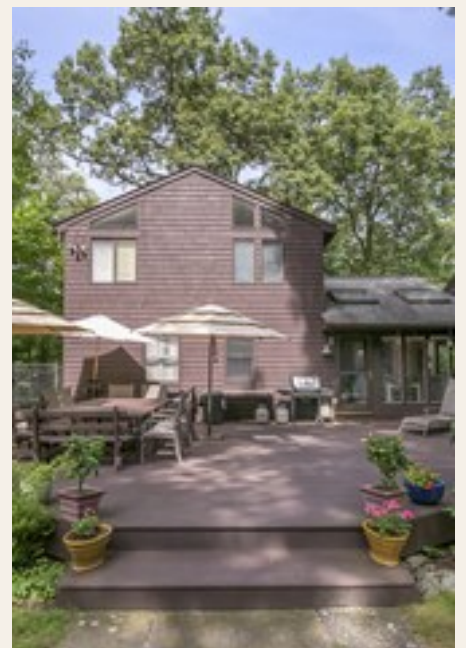
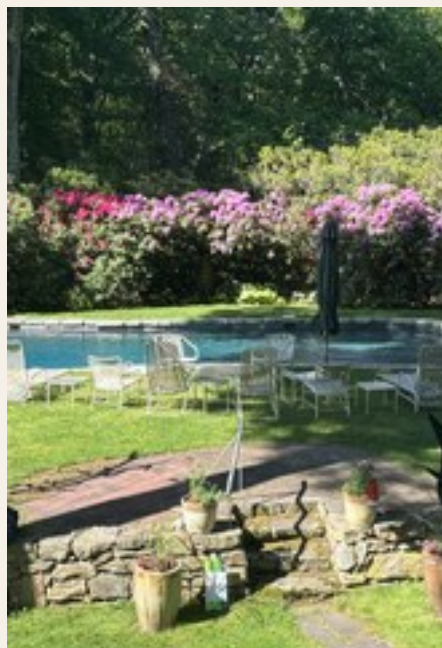
- Cathedral ceilings
- Raised hearth fieldstone fireplaces
- Antique wood, terracotta & bluestone floors
- Oversized picture windows
- A primary suite like a private sanctuary
- Two professional offices, separate entrance
- Heated Gunite pool
- Fully deer fenced 1 acre back yard
- Full-size, spacious 2-Car garage

A one-of-a-kind home for an unconventional family with bold ambitions.



More than a house — it's been a lifestyle canvas for 40 years. Three kids grew up here to become successful professors, artists, and social workers. The adults who've lived here have been a teacher, entrepreneur business owner, psychologist, painter, and metal sculptor. This isn't a cookie-cutter house — it's waiting for the next creative family to make it their own.

The grounds have been thoughtfully curated for beauty and privacy. Forsythia, magnolia, dogwood, rhododendron, and a weeping cherry bloom in sequence for a magnificent spring display. Strategically placed evergreens ensure green winters and four seasons of privacy.





THE SURROUNDINGS

A First Impression *That Stays With You.*

The approach to 257 immediately signals something different awaits. The private driveway brings visitors to a brick walk leading to a distinctive front door that opens into the foyer and then the expansive living room.

Continuing beyond the front door you'll find the deer-fenced acre with meticulously placed plantings — rhododendrons, azaleas, mature oaks, and evergreens that provide three seasons of near-total backyard privacy. These grounds are curated — not landscaped. There's a difference, and it shows.





Pool. Decks. Privacy. The Outdoor Life.

The free-form Gunite pool is surrounded by specimen plantings of Rhododendron and Mountain Laurel that burst into color each spring. A tall grass bed adds to the privacy of the pool which is just steps from the kitchen deck which easily accommodates 40 for cocktails and 20 for sit-down dinner. The screened pool house has lighting, Wifi and a ceiling fan; perfect for bug-free evenings. The private deck off the Primary Suite overlooks the entire tableau. The owner's original sculptures are placed throughout – each having a quiet conversation with the landscape.



A Private World Within a World.

A Private Residence Within a Residence



The Primary Suite is not a bedroom – it's a private residence within a residence. Enter through the hallway to a vaulted cathedral ceiling with open beams and unique LED up-lighting fixtures softly illuminating the ceiling.

Warm yourself on the sofa next to the raised-hearth fieldstone fireplace. View the backyard through double sliding glass doors that lead to the private deck overlooking the pool and gardens below – ideal for morning coffee and evening wine and cheese.



Every Detail Considered.

For Your Comfort



Walk In Closet

One room sized walk-in, custom configured for two serious wardrobes. Two exposures for abundant natural light from lots of windows, a cathedral ceiling (with fan), dresser drawers, a make-up table, and a window seat. This space can easily double as a nursery for the lucky couple.

Plus, there's a second multi-use cedar walk-in for shoes and supplies.



Every Detail Considered.

Primary Bath & Multi-Use Room



Primary Bath

A windowed, cathedral ceiling spa-like bathroom w/double sink, oversized Americh air-jet soaking tub, Kohler Purewash Bidet toilet, walk-in shower (rain head, wall head, shower wand). A towel heater and radiant floor heat completes the experience.

The Multi-Use Room

A unique space with a full laundry (SpeedQueen W/D), coffee station, toaster, mini fridge/freezer. Plus shelving, cabinets radiant heat and a bonus toilet! Morning to evening without leaving your world.



The Room That Sets the Tone.



Step through the distinctive front door, through the foyer and past the powder room, directly into the living room — and the house announces itself. Hob-nailed antique hardwood floors, a soaring fieldstone wall with raised-hearth fireplace, and two sets of sliding glass doors opening onto the private backyard. A stunning impression from the first moment. The living room flows naturally into the dining room and kitchen beyond — an open design that's warm, friendly and inviting.



Dine with Antique Barnwood Siding & A Bluestone Floor — Original Art on Every Wall.



The formal dining room seats 12+. It's surrounded by ½ height antique barnwood siding, and the floor is hand-laid natural bluestone. Original paintings by the owner bring warmth and texture. The sliding glass door opens to the private deck connecting the dining room, kitchen/mudroom, and the garage/offices. The window box herb garden, steps from the kitchen, adds fresh flavors to seasonal dining.



The Working Heart of the Home.



With a 2025 update, the kitchen is a great working space — designed for family meals and entertaining alike it features a gas cooktop, convection wall oven, microwave, trash compactor, Bosch dishwasher, GE Energy Star fridge/freezer, plenty of cabinet space, and two large pantry/closets.

The eat-in breakfast room connects the dining room, kitchen and back yard entertainment deck. A wall of south facing windows, two skylights and a ceiling fan make it the center of family living.

The kitchen exits to the first floor laundry/mud room/pantry and door to the fenced dog-run and also the private deck to the garage and two professional offices above it.



Sunken. Quiet. A Cathedral-Ceilinged Family Refuge.



The sunken den is a sanctuary — filled with natural light from oversized windows, under a cathedral ceiling that makes the space feel both intimate and grand. It doubles as a perfect home office or media room, fully wired for DirecTV, Optimum Cablevision, and the property-wide eero WiFi system. A loft above adds to the allure and the possibilities.



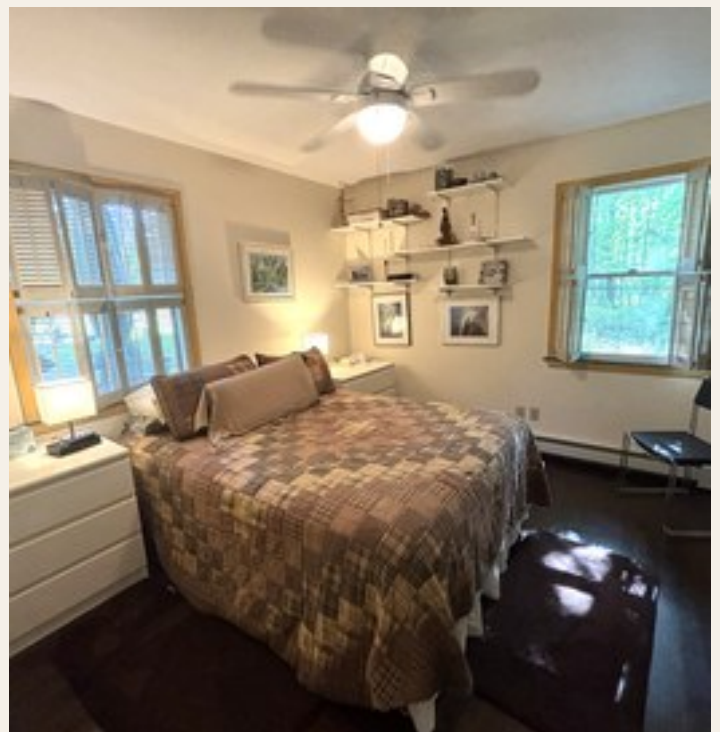
The Three Bedrooms.

Flexible Arrangements for Family, Guests & Live-In Au Pair

One on the ground floor · Two on the second floor · Bathroom on each floor



Beyond the Primary Suite, three additional bedrooms provide flexible arrangements for family, guests, or a live-in au pair. One is on the ground floor and two on the second — each generously proportioned, well lit, and with a bathroom on each floor making them nearly en-suite. The second-floor bath features a double sink, water-closet toilet, and a large walk-in shower.



Room To Play - A Permanent Houseguest

Louie's Playpen



The Playroom

Playroom for children, gym for adults, game room for everyone — it adapts to the season and stage of life, anchoring the informal end of the first floor.

Meet Mona

She's lived here for over 10 years, in her own powder room shower — surprising and charming every guest. She may just stay if she likes the new family.

Louie's Playpen Dog Run

His fenced dog run means no cold-weather walks. Let Louie out through the mudroom and he'll be back soon, ready to romp in the fenced backyard.

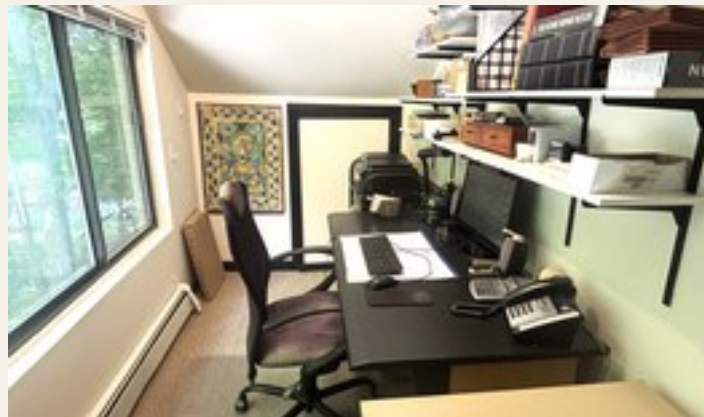


Two Offices. One Commute. No Traffic.



About the Offices

Above the 2-car garage, two fully separate professional offices offer the work-from-home setup most people only dream about. Private, quiet, and set apart by 6 steps from the main house — ideal for remote work, running a business, or client and patient sessions. Fully connected with eero WiFi, DirectTV, three landline phones, and Optimum Cable.



The rare thing.

A home this considered does not come along often.

Four bedrooms. Four baths.

3,720 square feet across two levels of architect-designed contemporary living.

Two professional offices.

A resort-style Gunite pool.

Two acres of manicured privacy.

Original sculpture and art throughout.

Forty years of stewardship by the same family.

A character that cannot be staged or replicated.

Is 257 the right fit for your family?

257Kitchawan.com - Private Viewings by Appointment Only

[Contact: 257kitchawan.com/contact](https://257kitchawan.com/contact)

257 Kitchawan Road – All The Details

South Salem (Lewisboro), Westchester County, NY 10590

4 Beds | 4 Full Baths | 3,720 SF | 2.02 Acres | Built 1960, Renovated 1986 & 2024

Parking

Attached, Driveway, Garage Door Opener
Garage Spaces: 2 | Type: 2 Car Attached

Fireplace Information

Has Fireplace: Yes | Fireplaces Total: 2
Living Room (Fieldstone, Raised Hearth)
Primary Bedroom (Fieldstone, Raised Hearth)

Appliances

Gas Cooktop, Convection Wall Oven
Dishwasher, Disposal, Trash Compactor
Dryer (x2), Washer (x2), Microwave, Refrigerator
Energy Star Appliances, Water Conditioner
Full House Auto-Start Generator

Heating & Cooling

Cooling: Ductless Mini-Split (3), Ductwork 2 Zones
Through-Wall A/C Units 11,000 BTU (2)
Heating: Hot Water Baseboard (5 Zones), Oil

Room Information

Basement: Crawl Space | Attic: Scuttle
Rooms Total: 9
Family Room/Playroom/Exercise Room
Home Office (x2), Sunk-in Den, Loft

Interior Features

Cathedral Ceiling(s), Ceiling Fan(s)
Eat-in Kitchen, Formal Dining Room
Pantry (2), Primary Bathroom, Walk-In Closet(s)
Mudroom, Loft
Flooring (Key Rooms): Antique Hardwood (Hob-Nailed), Terrazzo
Flooring: Hardwood Floors Throughout
Laundry: Two Rooms (Main Level + Primary Suite)

Bathroom Information

Bathrooms Full: 4
Primary Bath: Radiant Floor Heat, Kohler Purewash
Americh Air-Jet Soaking Tub, Walk-in Shower, Towel Heater

Patio & Outdoor

Deck (Extra Large, off Kitchen)
Private Deck w/Herb Garden (Dining/Kitchen/Garage)
Private Deck (off Primary Bedroom)

Window Features

Breakfast Room Skylight(s)
Oversized picture windows throughout

257 Kitchawan Road – All The Details

South Salem (Lewisboro), Westchester County, NY 10590

4 Beds | 4 Full Baths | 3,720 SF | 2.02 Acres | Built 1960, Renovated 1986 & 2024

Home facts / Data believed accurate but not warranted.

Exterior Features

Heated In-Ground Free-Form Gunitite Pool
Large Fenced Direct Access Dog Run
Sprinkler System (Pool Level)
Driveway/Outdoor Lighting
Construction: Wood Siding
Fencing: Deer Fenced Back Yard
Security: Video Cameras (excluded from sale)

Property Information

Living Area: 3,720 Sq. Ft.
Property Sub Type: Single Family — Contemporary
Levels: 2 | Year Built: 1960
Pool: In-Ground, Free-Form, Equipment/Cover Included

Lot Information

Lot Size: 2.02 Acres
Level, Partly Wooded, Maximum Privacy

School District

Katonah-Lewisboro
Elementary: Meadow Pond
Junior High: John Jay Middle School
High School: John Jay High School

Tax Information

Tax Year: 2025 | Annual Amount: \$26,709
Tax ID: 3000-045-00A-09827-000-0060

Assessment

Assessed Value: \$75,300
Tax Source: Municipality | HOA: None
Certificate Of Occupancy: Y

Utility Information

Electric: NYSEG | Sewer: Septic
Water: Drilled Well | Garbage: Private

Additional Systems

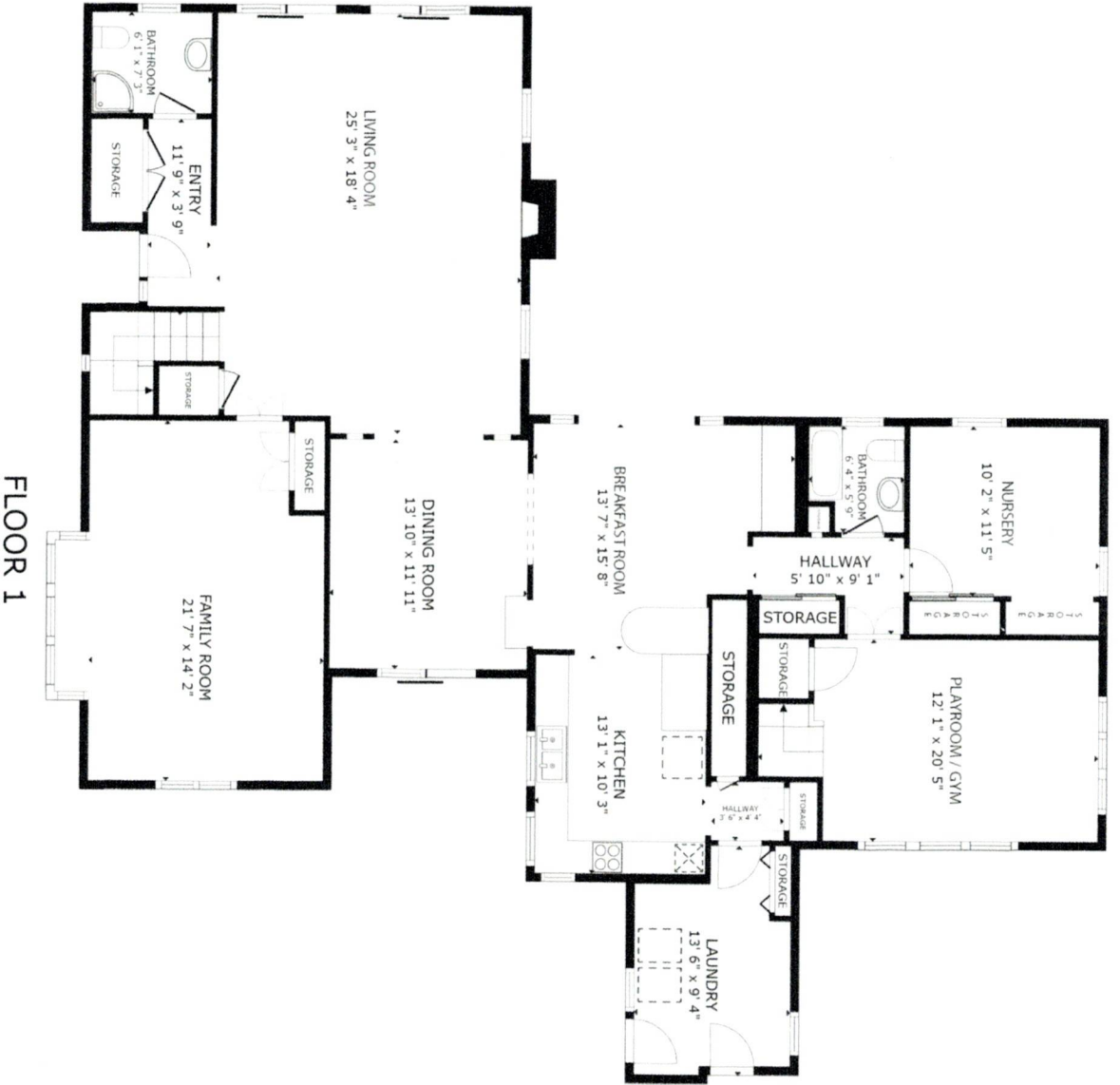
Fuel: Oil Above Ground / Propane Above Ground
Heat Zones: 5 + Hot Water
Generator: Full House — Included
Water Conditioner: Owned
Internet: Optimum Cable / eero WiFi
DirecTV / Optimum Cable
Fire Alarms: Nest System – Full House
Security: Ring Doorbell & Driveway Cam

Location Information

County: Westchester | City/Town: Lewisboro
Post Office: South Salem | Zip Code: 10590
Near Metro North (Katonah, Goldens Bridge, Southeast)
Major Hwys: 684, Merritt Pkwy

Public Facts

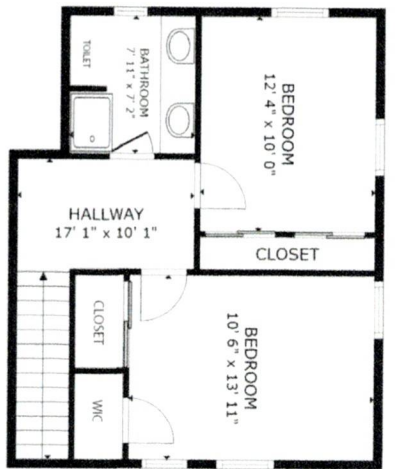
Beds: 4 | Baths: 4 Full | Sq. Ft.: 3,720
Stories: 2 | Lot: 2.02 Acres
Style: Contemporary | Year Built: 1960
Renovated: Primary Suite 2021



FLOOR 1

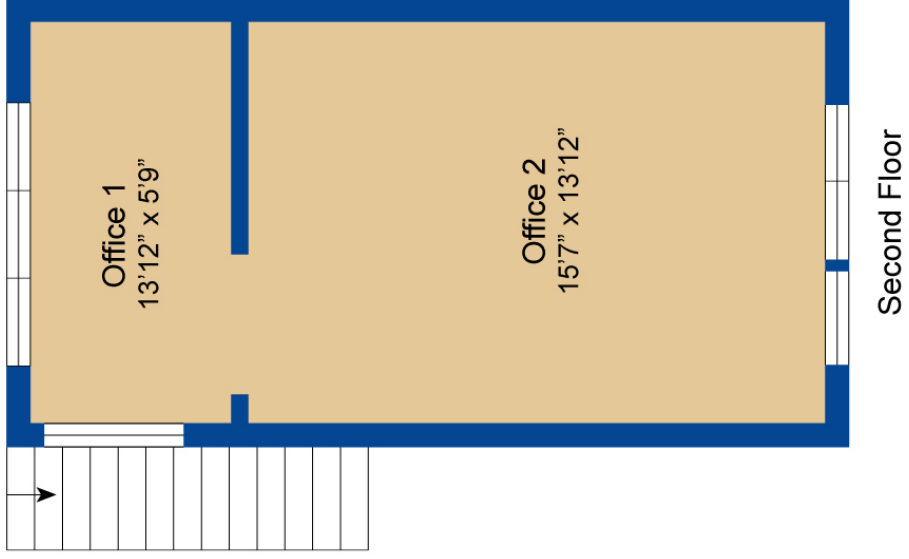
GROSS INTERNAL AREA
 FLOOR 1 2,112 sq.ft. FLOOR 2 1,259 sq.ft.
 TOTAL : 3,371 sq.ft.

SIZES AND DIMENSIONS ARE APPROXIMATE. ACTUAL MAY VARY

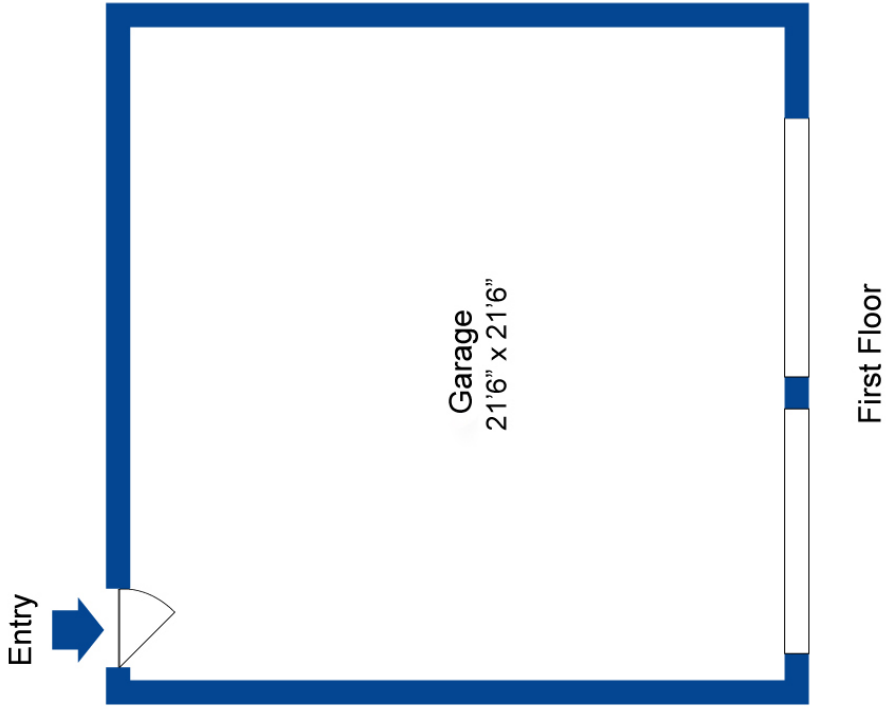


FLOOR 2

GROSS INTERNAL AREA
 FLOOR 1 2,112 sq.ft. FLOOR 2 1,259 sq.ft.
 TOTAL : 3,371 sq.ft.
 SIZES AND DIMENSIONS ARE APPROXIMATE. ACTUAL MAY VARY



Entry





THE NEIGHBORHOOD

South Salem & Beyond:

A Place Where You'll Want to Spend Your Time

257 Kitchawan Road sits at the center of one of the most quietly extraordinary corners of the Northeast. Westchester country, Michelin-starred dining, top-rated schools, and Metro North connectivity, horse country and nature sanctuaries and hiking — all within a short drive. This is country living with none of the sacrifices.

South Salem NY – Where you live

Leon Levy Park (hiking trails), Onatru Farm Park (playing fields, tennis courts, hiking trails), Town Park (playing fields, town pool), Vista Shopping Center (green grocer, pharmacy, sandwich shop, pizza shop, Chinese restaurant, dry cleaner, discount beverage, hair & nails, post office), Auto service and gas stations.

Katonah, NY · 11 miles

Metro North Station — 55 min to Grand Central. Village shops, galleries, the beloved Katonah Deli, and John Jay Homestead State Historic Site.

Ridgefield, CT · 5 miles

Aldrich Contemporary Art Museum, ACT of CT theater, acclaimed dining with delivery services. A vibrant, walkable Connecticut arts town.

Scotts Corners / Pound Ridge, NY · 4 miles

Excellent locally owned supermarket. Lively local business community including antique dealers, three local restaurants, two specialty bakeries, take out restaurants, the famous Chubby's Hardware, and a lively weekend scene.

Bedford, NY · 8 miles

Equestrian estates, the historic Bedford Village green, Westchester's finest dining. The Bedford Playhouse and Arts Center. A neighbor to the world.

Mt. Kisco, NY – 14 Miles

Restaurants, shops, Metro-North station, highly rated Northern Westchester Hospital.

Cross River, NY · 7 miles

Ward Pound Ridge Reservation — 4,700 acres of hiking and riding. Local dining, supermarket, Cameron's 24/7/365 deli. The historic Horse & Hound restaurant.

New Canaan, CT · 7 miles

Metro North New Canaan Branch. Boutique shopping, the Glass House (Philip Johnson), and a robust dining and social scene favored by NYC transplants.

Pleasantville, NY · 22 miles

Jacob Burns Film Center, dining and shopping.

South Salem & Beyond:

A Place Where You'll Want to Spend Your Time

Exceptional Dining & Schools

Exceptional Dining — Nearby:

Blue Hill at Stone Barns — Pocantico Hills, NY · ~25 min

World's 50 Best. Two Michelin stars. Dan Barber's farm-to-table masterpiece on the Stone Barns estate. A 30-course tasting menu unlike anything else in the region.

The Inn at Pound Ridge by Jean-Georges — Pound Ridge, NY · 4 miles

Michelin-recognized. Jean-Georges Vongerichten's casually elegant farm-to-table in a restored 1833 farmhouse. Your neighborhood fine dining.

Public School – Katonah Lewisboro School District:

One of Westchester's most highly regarded public school districts, consistently ranked among New York State's top performers.

Meadow Pond Elementary · Increase Miller Elementary · John Jay Middle School · John Jay High School

Private Schools Nearby:

Harvey School

www.harveyschool.org

Rippowam Cisqua School

www.rcsny.org

Rye Country Day School

www.ryecountryday.org

Hackley School

www.hackleyschool.org

New Canaan Country School



SOUTH SALEM · WESTCHESTER COUNTY · NEW YORK

257 Kitchawan Road

Modern Country Living — 50 Miles From Times Square

4 Bedrooms · 4 Full Baths · 3,720 SF · 2+ Acres · 2 Professional Offices